

“SInX” validates both the solution and the technology against the user requirements for suitability of purpose and for sustainability

▪ Solutions Offered

- e-Suites
 - eProcurement
 - eMedical Records Systems (eMRS)
 - Education ERP (eEduRP)
 - eCommunication Server (SecuraNET Email Solutions)
- e - Security
 - SecuraNET (Unified Threat Management)
- e - T2RC (Track, Trace, Report and Control)
 - RFID
- e - BMS (Building Management System)
- e - F2S (Facilities Security Solution)
 - IP / CCTV Security and Surveillance Systems

The “SInX” eSuite of Standard Software Solutions targets profitability by addressing & meeting the challenges of the “Procurement Processes” ...

Challenges:

- Linking of all suppliers to Procurement Systems
- Disparate systems between Company and its Vendors
- No single platform available (other than emails) to communicate with all Vendors / group of Vendors
- Implementation and adherence to eRFQ / eRFP bidding processes
- Manual steps in the workflow, paper-based systems are time consuming and inefficient
- Non-availability of on-time information on Status of Bids, Status of Vendors, Vendor Selection, and Auctions and
- Integration with standard implemented ERP packages

... architecting efficient processes, workflows and database repositories , that ensure quick acceptance by Vendors / Suppliers

Solution	Modules	Types of Tender Supported	Scope	Auction Features
Details	<ul style="list-style-type: none"> • eBidding / eTendering • eRFQ, eRFP with Reverse and Forward Auctioning • eVendor Management • eContract and Services Management • eCRM 	<ul style="list-style-type: none"> • Goods Tender • Works Tender • Services Tender • Open / Closed Tenders • Single / Multiple Currency Tenders • Single / Multi Level Tenders • Single / Multiple Line items Tender 	<ul style="list-style-type: none"> • Vendor Registration and Approval • Tender / Bid Configuration • Bid Management • Technical & Commercial Evaluation • Forward & Reverse Auction • Contract / CMS • Reports 	<ul style="list-style-type: none"> • Reverse & Forward Auction • Multiple Currencies • Multiple Line Items • Auto Bidding • Buyers Names Masking • Block buyers • Undo buyers last bid • H1 on basis of Unit Rate • H1 on basis of

Medical records of patients need to be available in real time, but there are challenges....

Challenges:

- Tracking Patient history & data for a longer period.
- Identifying patients who are due for preventive visits and screenings
- Monitoring patients parameters, such as vaccinations and blood pressure readings etc
- Improving overall quality of care in a practice
- Real time availability of Patient information on any “internet supported” device

...“SInX” provides eMRS (eMedical Records Systems) for secure, real time information of patient and current parameters to the doctors...

Solution	Specification of the eMRS	Patient Details	Access Type	Security
<p>Details</p>	<ul style="list-style-type: none"> • Advanced Security by user access rights • Patient register with patient specific info . • Authentication by electronic signature. • Advanced searching facilities on patient documents. • Activity logs and log registry 	<ul style="list-style-type: none"> • Patient Name • Medical Record Number • Date Of Birth • Attending Physician • Consulting Physicians with multiple names. • Department • Document Type • Date of Document • Signature 	<ul style="list-style-type: none"> • Physicians will have access to all the records of all patients. They can change patient's records later. • ER will always have access to all the records, all the times. They can print it but not copy it. • Patients will have right to print/copy records. • Billing will have right to see all records. but no 	<ul style="list-style-type: none"> • If there is inactivity for more then 3 minutes, the user will be logged out. • No right click or print screen permission. • For every user logged in, the criteria for accessing records will be logged. • An Audit trail is provided that reports user and patient whose record was accessed.

eEduRP is dedicated to addressing the specific requirements of Educational Institutes ...

Challenges:

- Absence of a Secure Single Point Access
- Lack of integration of all functions on one platform
- Lack of transparency in academic & financial transactions
- Lack of inter-departmental coordination
- No interface for interaction between students, teachers, parents & alumni

...the “SinX” validated eEduRP System is an integrated Campus Management System

Solution	Features	Strategic Implications	Modules	Advantages
<p>Details</p>	<ul style="list-style-type: none"> • Intranet / Extranet based architecture • Centralized database with single sign-on • Modular • Data & Application Security • Alerts • Customized Reports • Integrates Applications across 	<ul style="list-style-type: none"> • Standard Processes across departments • Hierarchical access to information – Management / Faculty / Students • Real time integrated view of information • Higher co-ordination between departments through integrated network 	<ul style="list-style-type: none"> • eLearning • Classroom Training • Event Management • Security & Surveillance • Asset Tracking • RFID School Library • Bus Tracking 	<ul style="list-style-type: none"> • Campus wide integrated information systems • Smart ID cards to facilitate effectiveness and efficiency • Complete Security Solution • Effective RFID based Asset Tracking Systems

Secure communication is essential for the Data & Information Supply Chain...

Challenges

- Available solutions in the market are very expensive
- Expertise are not easily available
- Deployment is cumbersome
- Performance and stability issues



eCommunication is a, “SInX” validated robust, secured, easy to implement and cost effective solution

Solution	Scope	Admin Features	Security	Advantages
Details	<ul style="list-style-type: none"> • Simple and Powerful Web-based Administration • Flexible Deployment Options • Virtualization Ready with Business Critical Features • Open and Flexible for Integration 	<ul style="list-style-type: none"> • Real-time mailbox backup and restore; • Integrated anti-Spam, antivirus, and directory services (LDAP, Active Directory) • Admin Scripting Tools are also available for large scale / batch operations. 	<ul style="list-style-type: none"> • Secure Email and Anti-Spam • Integrated Anti-virus (AV) • Integrated Anti-Spam (AS) 	<ul style="list-style-type: none"> • eMailing System that is administered through Web browser • Easy deployment, administration, support, reliability, stability and scalability • Additional Supported Clients: Microsoft Outlook, Outlook Express • Virtual office - a web interface to access and send emails, store files (even remotely),

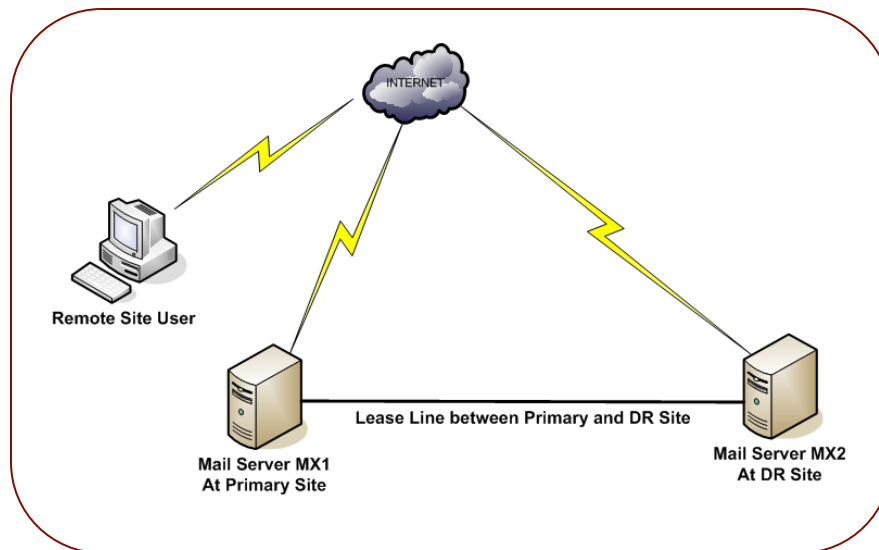


... which provides 3 different solutions to meet business requirements..

We have 3 possible solutions for meeting the technical and functional requirements

SecuraNET Email Solution 1 Mail Server Configuration

1. One Mail Server at Primary Site
2. One Mail Server at DR Site



The components offered in all solutions include:

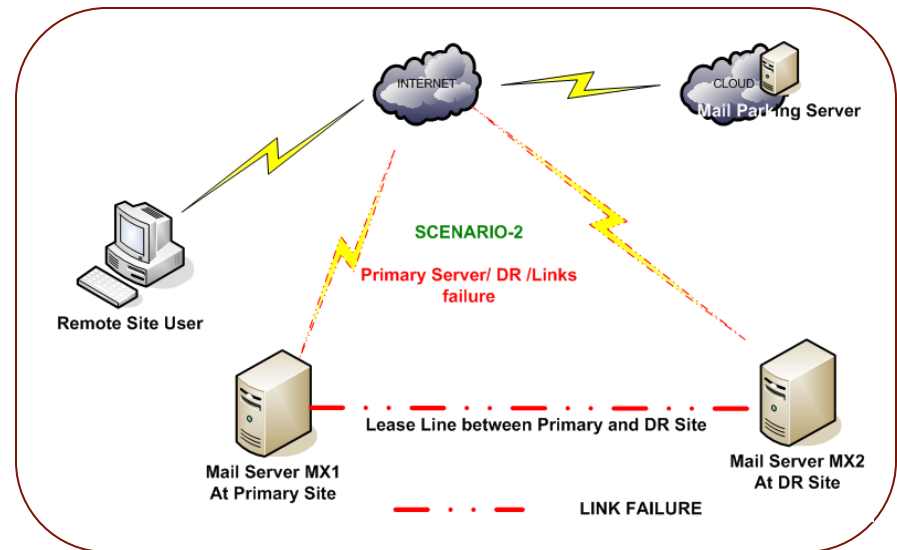
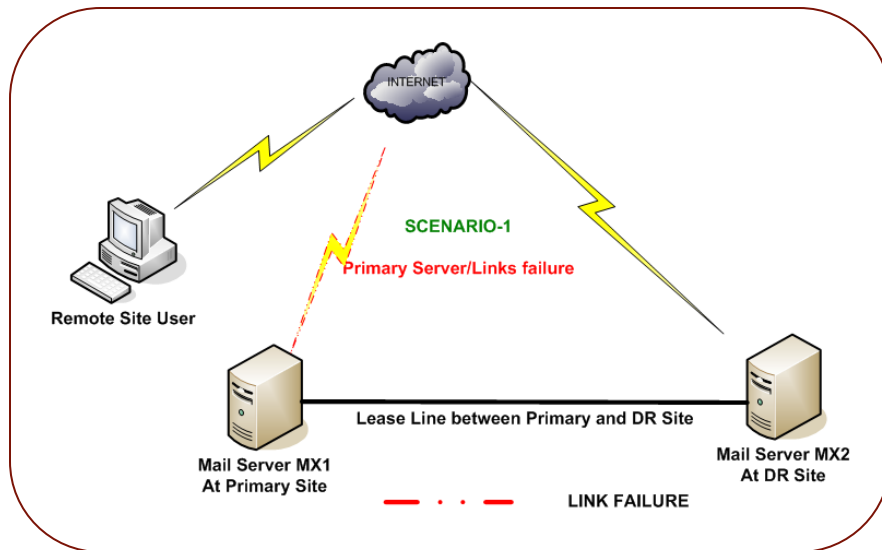
- LDAP Services
- POP Services
- IMAP Services
- SMTP Services
- WebMAIL (Web Access with Virtual Office Component)
- Antivirus Services
- Antispam Services
- Mail Backup Services
- Mail Encryption and Third party integration
- Security Policy Administration Component

... based on location of offices, disaster recovery requirements and...

SecuraNET Email Solution 2

Mail Server Configuration

1. Mail server at Primary Site (MX1)
2. Mail Server at DR Site (MX2)
3. Email Parking Services on cloud with MX3

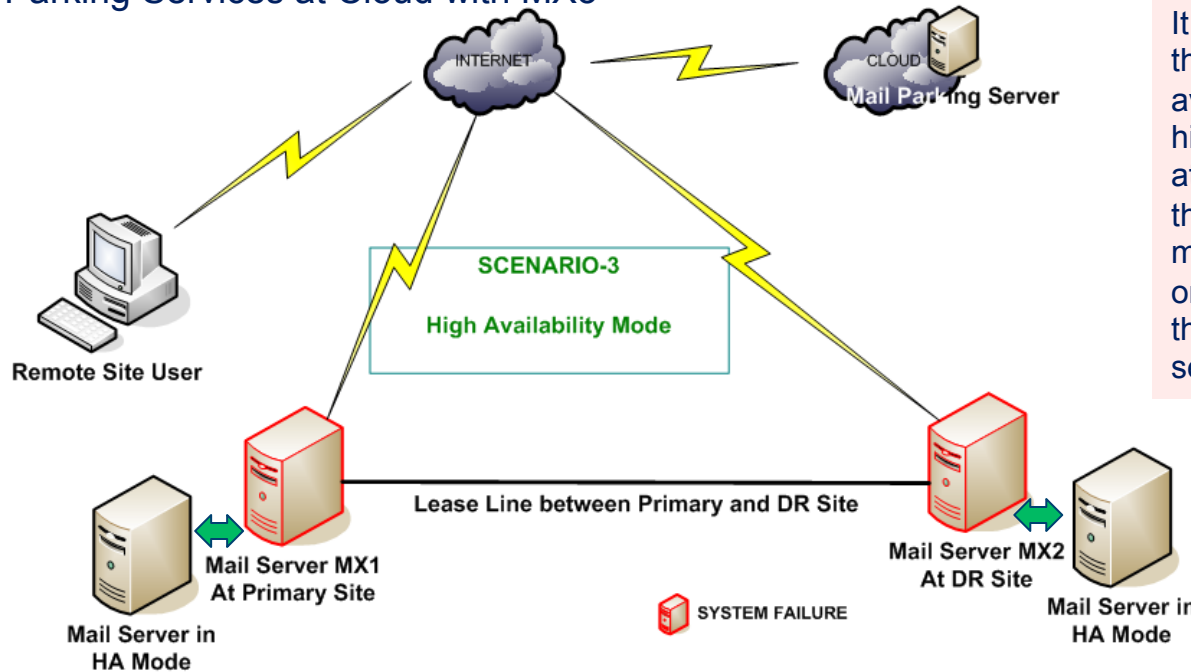


.. Hosting on the cloud

SecuraNET Email Solution 3

Mail Server Configuration

1. Two Mail servers at Primary Site (MX1); (Configured in High Availability)
2. Two Mail servers at DR Site (MX2); (Configured in HA – High Availability)
3. Email Parking Services at Cloud with MX3



High Availability Mode

It is a high Availability option that ensures redundancy and availability of Data at a very high level. There is redundancy at the hardware level and for that heart-beat between the two mail servers is established. If one of the servers goes down the other server will take over seamlessly.

Data and Information Networks are constantly under threat of attacks ...

Challenges:

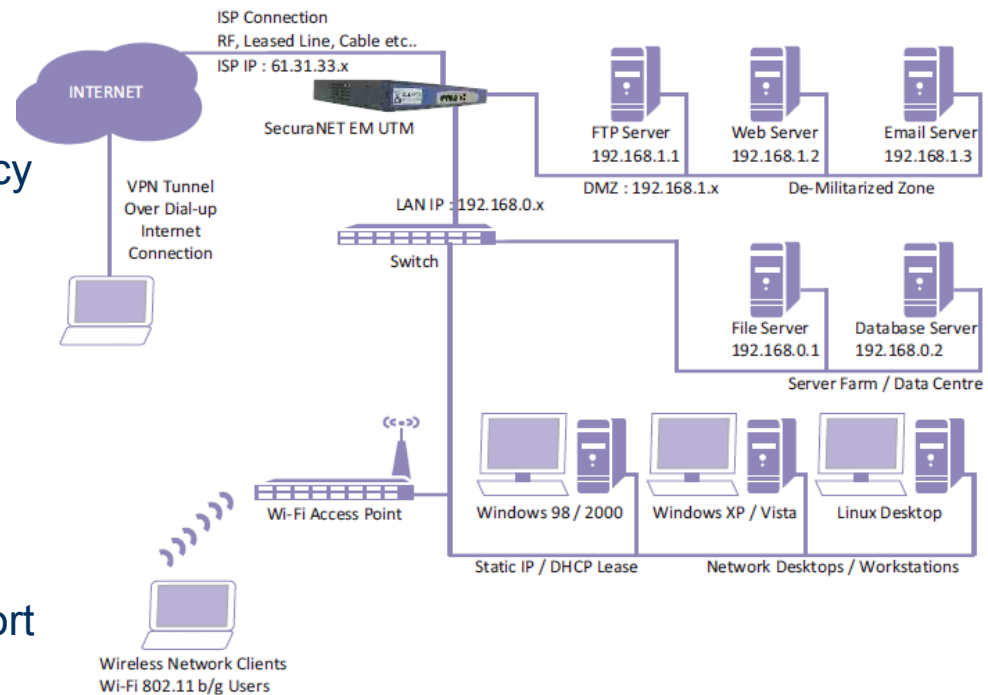
- Provision of secure environment
- Intellectual property theft, Corporate espionage
- Securing IT systems from attacks through Malwares, Botnets and Hackers
- Managing Internal Data Access Privileges to prevent data security breaches
- Managing Bring Your Own Device Policy security threat
- Introduction of new technologies and tools
- Disaster recovery & Business continuity
- Managing legal compliance
- Managing costs v/s risk

...SecuraNET (Unified Threat Management) Solution secures IT Environments....

Advantages:

- Secure with Active Firewall powered by Attack Prevention System
- Protect from Viruses, Worms, Trojan, Backdoors, Hackers, Attacks
- Manage bandwidth to increase efficiency and productivity
- Accelerate Internet access with web proxy caching system
- Authenticate all users with strong authentication parameters
- Integrate remote branch offices with 128bit encrypted IPSEC VPN tunnels
- Visualize all activities with detailed report logs
- Ensure high availability with fault tolerant automatic fail-over with Multi WAN support

Deployment Diagram



“SInX” recognizes the market demand for “Tracking, Tracing, Reporting on Tangible Assets” but also realizes the challenges.....

Challenges:

- Round the clock inventory check
- Monitoring staff attendance
- Vehicle movement and tracking
- Books management in a libraries
- High on Cost and Time Spent

...& addresses these with RFID based eT2RC Systems Solutions



RFID Tags

- Tags attached to Product, Vehicle, Patient, Books etc
- Tags transmit their ID .



Antenna

- Antenna provide power to Tag.
- Receive ID's transmitted by the tags.



Reader

- Detects RFID tags.
- Tag ID's are sent on to Application Server



Application

- Processes information product details, location, aggregation of assets.
- Creates business objects that applications can handle.



Integration

- Systems Updates inventory
- Notifies material Shipment.
- Triggers further commands

... customised for a diverse set of applications, eg. creating operational transparency of the Lignite supply chain from mines to power plants...

e-T2RC at Mines



eBMS, ie. eBuilding Management System Solutions, provide from “SInX” validated tools and control mechanism for automating BM Ops.

Business Requirement

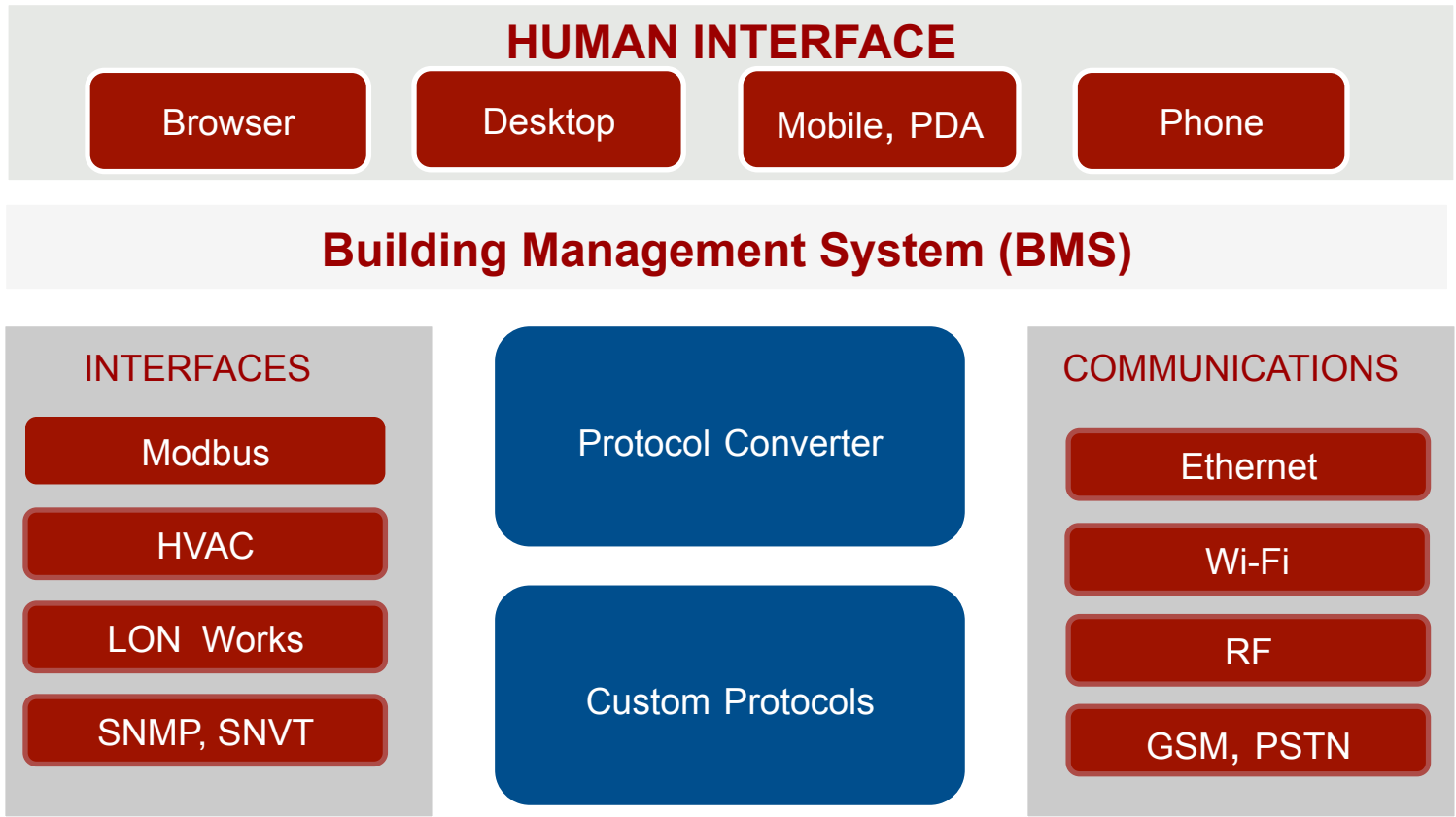
Solution Features

Solution Advantages



- Lower operating cost
- Better energy efficiency
- Longer life of building assets
- Better occupant comfort
- Improved output and productivity
- Greater visibility and control of operations
- Higher building value
- Improved sustainability

... through a Web based Application



“SInX” has reconfigurable eF2S for remote intrusion detection for use in Organizations, Schools, Hospitals, Hotels, Residential Areas, & other public areas

Challenges:

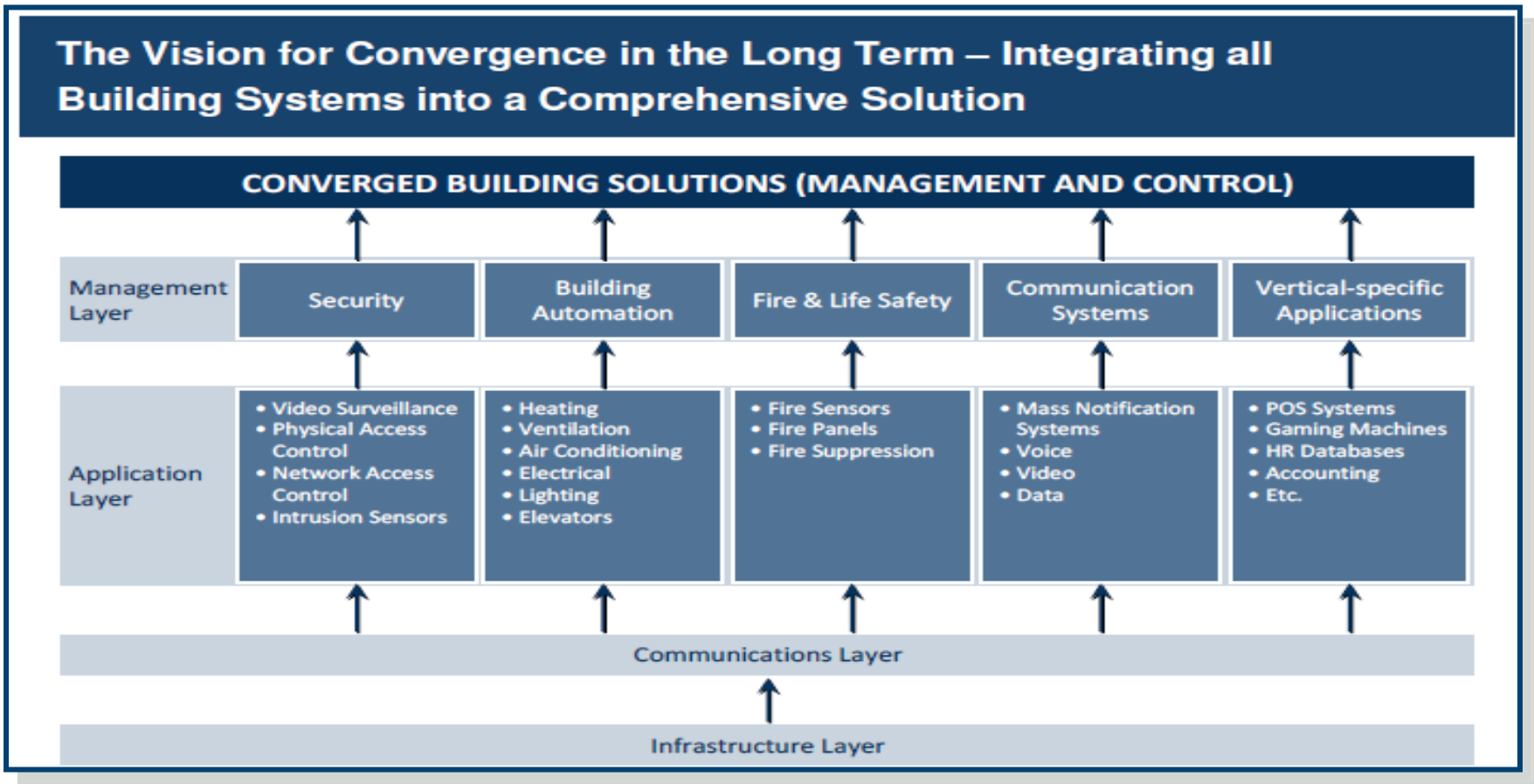
- Round the clock monitoring
- Dependency on manpower
- No Recording of Evidence
- Monitoring Public places and un-manned areas
- Managing legal compliance

eF2S (Facilities Security Solution) Includes:

- Requirements Evaluation
- Feasibility Studies
- CCTV/IP SURVEILLANCE Strategy
- CCTV/IP SURVEILLANCE System Design & Development
- System Procurement, Installation & Deployment
- Testing and
- Project Management



...using event based data collection, real time data consolidation & interpretation into usable information...





Notices



COMPANY PROPOSITION

Data is a commodity; each element of data has a price. Data is converted into Information and information is mined. “Data Elements” and “Information Packages” are saved and are communicated . The Challenge is the deployment of Methods and Tools for the Management of Data, the Structuring and Interpretation of Data into usable Information, the communication and the use of the Information for improving and sustaining Life is crucial but expensive, complex, disparate, and ever changing across community boundaries.

Our solutions addresses the needs for Integration of data / information creation, data / information management, data / information recycling, data / information communication technologies, development of the Data and Information building blocks / innovative use of the available technologies and their evolution.

Expression of “Executive, Strategic and Commercial Interest in a Partnership / Collaboration” should be directed to ***Tony Wadhawan***. This interest can be for Deployment, for Technology, for Manufacturing, for Financial (Commercial) partnership or for partnership that is Specific to project/s and could be in the form of: Joint Ventures / Partnership/s / License Agreements Franchisee Agreements, not limited to one Country / Region.